



TOTAL
interiors
Storage Solutions



Total Refurbishment Solution for Exhaust, Tyres & Batteries Ltd



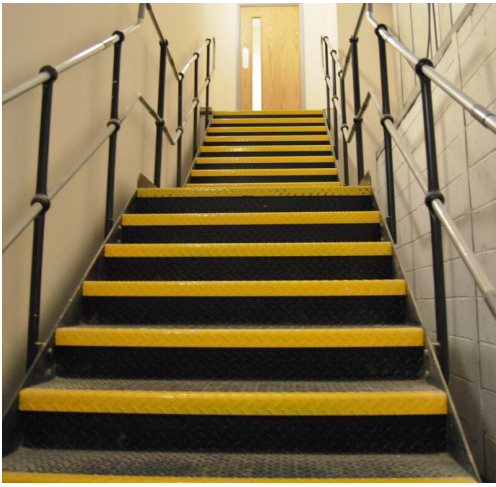
For over 35 years ETB, a family business, have continued to grow by offering their customers great service and excellent value. A network of 23 branches, open to the public, covers Worcestershire, Warwickshire, Gloucestershire, Herefordshire, South Wales and most recently a new state of the art branch in Plymouth.

For the trade, strategically situated regional centres in Worcestershire, Wales, Devon, and Cornwall, are able to offer daily or multiple daily deliveries together with a 'rapid response' on-demand service. However, ETB pride themselves on being more than just a tyre wholesaler; they are dedicated to creating partnerships through innovative solutions, unrivalled customer service and extensive choice of products.

As a result of the continued growth, ETB needed to increase the storage capacity in the main warehouse at the Head Office in Worcester and create additional office and staff facilities to cater for the growing workforce. It was here, thanks to their excellent reputation within the tyre industry, that Total Interiors were introduced to ETB.

Order picking is a critical part of any successful warehousing and distribution operation, especially around productivity, so the initial project was to double the storage capacity and at the same time improve the layout in the tyre order picking area. With over 150,000 items in stock, from all of the leading brands, ETB now have a more efficient picking operation in place to better serve the network of branches.





Happy with the way in which Total Interiors had managed the car tyre racking project, ETB then discussed their plans to create the additional office space together with the new Tyre and Exhaust Centre which would also be situated within the Head Office building.

Like the majority of customers who have benefited from a Total Interiors Refurbishment, ETB first contacted local builders with a view to a more traditional build, however that quickly changed when presented with a most cost effective and modern solution from Total Interiors; a 200m² two-storey mezzanine floor with extensive office space, a Board Room, IT facilities, modern canteen and stores area.

“We knew we were looking at a major project to transform the old building into the modern building it is now”, commented Chaz Ivill, Managing Director of ETB. “However we needn't have worried once we realised Total Interiors were more than just a racking company. From day one, Total Interiors instilled confidence in the ETB team with a comprehensive offering based on their vast experience in these type of refurbishment projects. We run a busy operation built on customer service so we needed a company who could manage and successfully undertake the project without it affecting our day to day business; and that company was Total Interiors.”

From conception to completion, the whole refurbishment programme was project managed by Total Interiors, working closely with subcontractors who are personally appointed and audited on a continual basis. Regular meetings, to plan and discuss the work schedule, also ensured that the ETB business continued to run smoothly.

The final part of the project is to create branch number 24. Housed at the end of the main warehouse, the area has been transformed into a state of the art Tyre, Exhaust and MOT Centre complete with a modern viewing gallery for the public.

ETB now have a modern Head Office and distribution warehouse to cope with the growing demands of a highly successful business and to cater for the daily needs of the ETB staff.

“We're delighted with the outcome”, continued Mr Ivill. “It's the culmination of fifteen months of hard word work and planning but now I can see it was worth it, the new facilities give ETB the capacity to evolve and continue our upward growth.”



Total Interiors Direct Ltd
Cadbury House
Blackpole East
Worcester
WR3 8SG

T: 01905 757506
F: 01905 757526
E: sales@totalinteriorsdirect.co.uk
www.totalinteriorsdirect.co.uk

